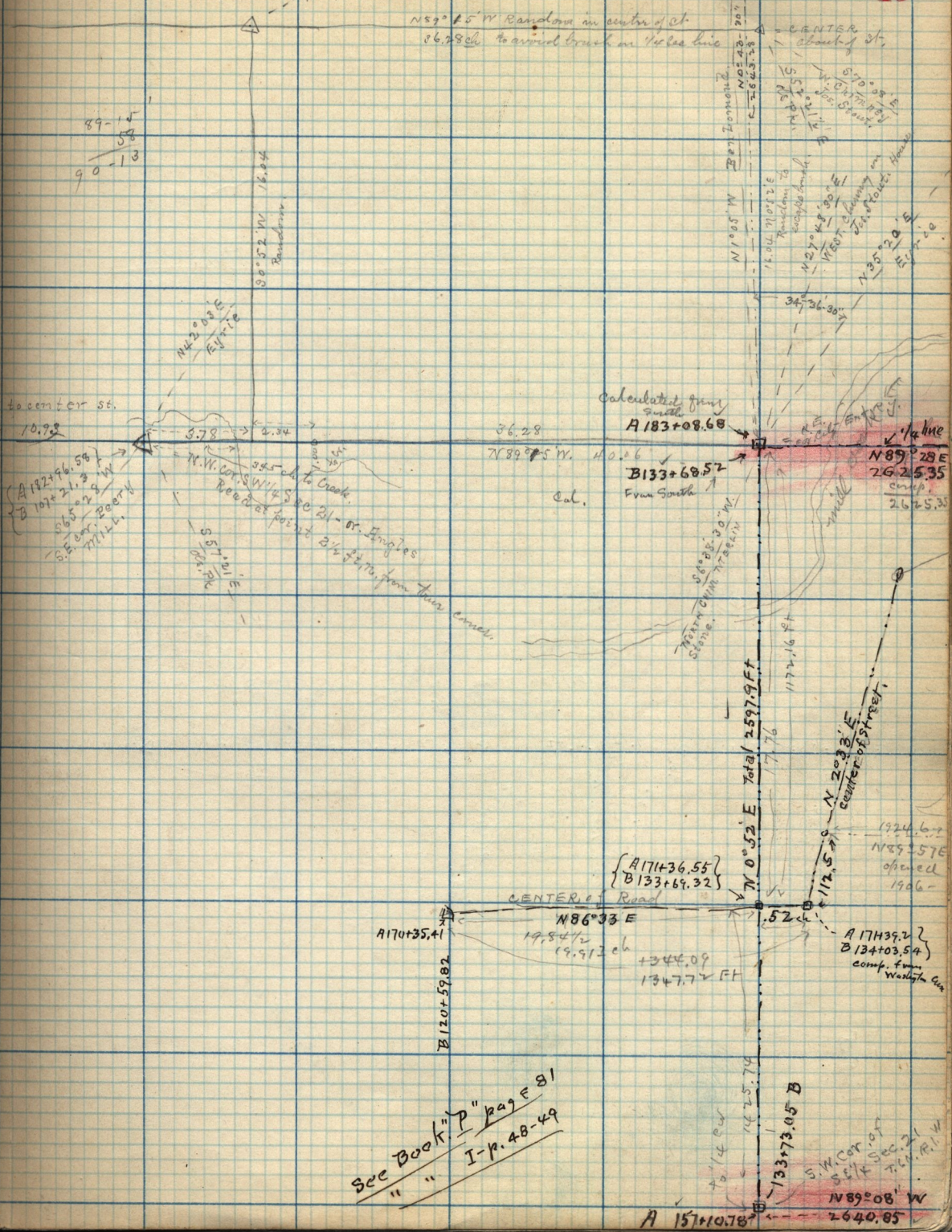


May 7-1886-



89-14  
58  
90-13

N 42° 03' E  
E.V. tie

30° 52' W  
Boundary

to center st.  
10.92

A 182+96.54  
B 107+21.3 W  
S 65° 23' E  
S.E. Cor. Road  
T.L.L.

3.78  
5.34  
36.28  
N 89° 25' W. 110.06  
Cal.  
From South  
N.W. Cor. Sec. 21 - or. Engles  
Road at post 2 1/2 ft. from these corners.  
S 51° 01' E  
S 51° 01' E

Calculated from  
small  
A 183+08.68  
B 133+68.52

N 100° W 207.20 ch. to center of st.  
18.04 170° 35' E  
Randomly to  
140° 25' W.  
127° 04' 39' E  
WEST  
125° 20' E  
34° 36' 30'

81° 08' 30" W  
NORTH CHINESE  
S 80° 00' E

N 89° 28' E  
2625.35  
comp.  
2625.30

{ A 171+36.55 }  
{ B 133+69.32 }

CENTER of Road  
N 86° 33' E  
19.84 1/2  
(19.912 ch.  
1344.09  
1347.72 FT

N 20° 30' E  
CENTER OF STREET

1924.62  
N 89° 57' E  
opened  
1906-

A 177+39.2  
B 134+03.54  
comp. from  
Washington Co.

B 120+59.82

1425.74  
133+73.05 B

S.W. Cor. of  
Sec. 21  
S 51° 01' E  
T.L.L.

N 89° 08' W  
2640.85

A 151+0.78

See Book "P" page 81  
" " I-P. 48-49